



**Agilent  
1220 Infinity LC**



**Infinitely more  
affordable**

**1220**

The Measure of Confidence



**Agilent Technologies**

# Infinitely more affordable

Is your lab looking for a future-proof system that provides superior performance and robustness for routine analyses, run after run and day after day? Are you looking for the best system on the market that fits your application needs and your budget? Here's the answer: the **1220 Infinity LC** from Agilent – the manufacturer of the most-trusted LC with 40 years of innovation and experience in separation science. Take the advantage of Agilent's unmatched combination of advanced instrumentation, versatile software and application-matched columns and consumables.

## Integrated, robust and easy to use

Each system is tested in its final configuration prior to shipment, making start up in your lab fast and trouble free. Right out of the box even inexperienced users can master the system quickly and obtain first-rate results.

## Superior performance in a system optimized for everyday productivity

Run-after-run, day-after-day reproducibility. Extraordinary results. For all your routine applications – including those that must comply with regulatory requirements – the 1220 Infinity LC offers uncompromised performance for HPLC and UHPLC.

## Industry leading quality and Agilent long-life reliability at a highly attractive price

With more than 100,000 LC systems sold Agilent is the acknowledged leader in liquid chromatography. Invest in quality – at an affordable price.

## Simply more value

The Agilent 1220 Infinity LC is ideally suited to address the needs of small to medium sized labs that are mainly concerned with routine analysis using standard HPLC but would like to take advantage of UHPLC. The system delivers all the performance needed to meet stringent regulatory demands – while setting new standards for compactness and ease of operation.

As part of the 1200 Infinity Series and representing the entry-point system, the Agilent 1220 Infinity LC leverages the latest technology by sharing components with 1260 Infinity and 1290 Infinity LCs.

3-5 YEAR  
UP-AND-  
RUNNING  
GUARANTEE

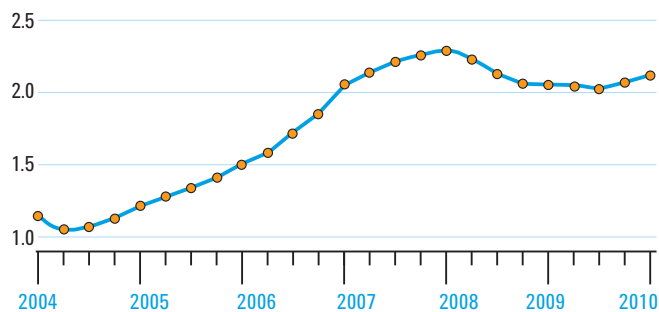
Whatever your budget or application, the Agilent 1200 Infinity Series delivers the best LC value in the industry. From our most affordable 1220 Infinity LC to the new industry standard 1260 Infinity LC to the powerful 1290 Infinity LC, we have a solution that's right for you. Plus our most popular 1200 Infinity Series LC configurations are now available with a 3-5 year up-and-running guarantee.\*





The Agilent 1220 Infinity LC was selected as the Best New Separations Product of 2010 by the members of the SelectScience.net web community.

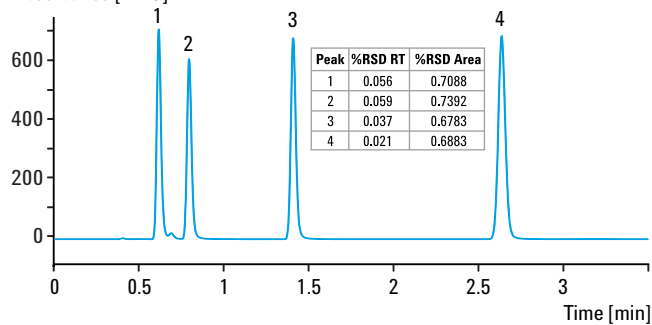
### Agilent Quality Index



Our continuous commitment to reliability and robustness is reflected in the Agilent Quality Index that has more than doubled over the last 5 years.

\* Regional differences might occur, please contact your local Agilent representative.

ZORBAX Eclipse Plus C18, 3.0 x 50 mm, 1.8  $\mu$ m  
Absorbance [mAU]



UHPLC capability and excellent reproducibility of retention times and areas from six repetitive isocratic analyses of a standard sample – with 3  $\mu$ L injection volume.

To learn more about the Agilent 1220 Infinity Series, visit [www.agilent.com/chem/1220](http://www.agilent.com/chem/1220)

# Simply more in tune with your lab's needs

Take a close look at the Agilent 1220 Infinity LC System and you'll find everything you need for first-class results and rewarding day-after-day productivity. Choose from three standard configurations to fit your LC workflow and rest assured that you have made an investment that is truly future-proof.

With a range of future options available, you can choose an upgrade path that meets your lab's requirements today and tomorrow. Move from isocratic to gradient solvent delivery, from manual injector to autosampler, or add a click-in column oven.

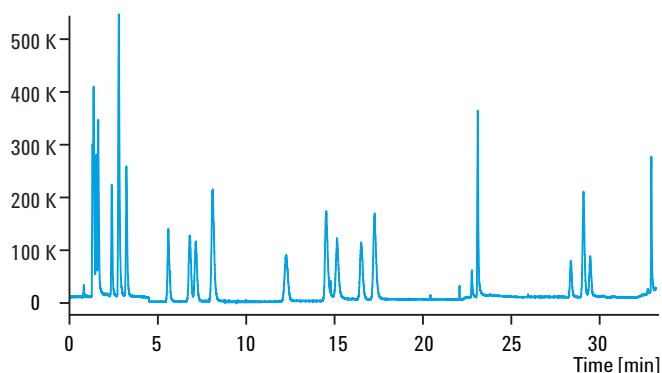
- Extend your detection capabilities with any 1200 Infinity Series detector such as diode array (DAD), evaporative light scattering (ELSD), fluorescence (FLD) or refractive index (RID) or 6100 Series Single Quadrupole MS
- Upgrade your Agilent CDS software from a single workstation to a client/server installation for enhanced system control and data handling

## Solvent delivery

Based on the design used in the Agilent 1260 Infinity LC, the pumping module ensures stable, virtually pulse-free solvent flow up to 10 mL/min. Servo-controlled, dual floating pistons enable variable stroke volume optimized for the selected flow rate, and keeps maintenance to a minimum. The pressure range up to 600 bar lets you discover the power and advantages of columns with smaller particles for optimization of resolution and faster run times. Choose from different configurations, including either an isocratic pump or a gradient pump with up to two solvents and integrated two-channel degassing unit. Pump options include:

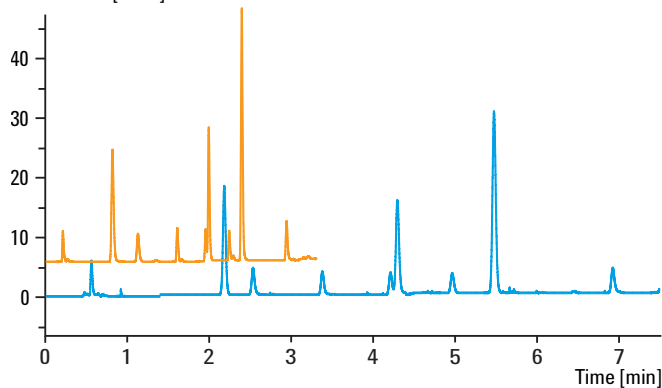
- Automated solvent selection valve for gradient pump, combining two-out-of-four solvents for gradient formation or for column flushing with different solvents
- Continuous seal wash kit – based on the design of the Agilent 1260 Infinity pumps – to prevent corrosion for applications running buffer solutions with high salt concentrations (> 0.1 M)

The gradient pump includes an integrated dual-channel degassing unit that creates continuous vacuum using the same Teflon AF technology used in the 1290 Infinity Binary Pump. With low internal volumes of 1.5 mL per channel, the degassing unit eliminates baseline fluctuations and shortens equilibration times.

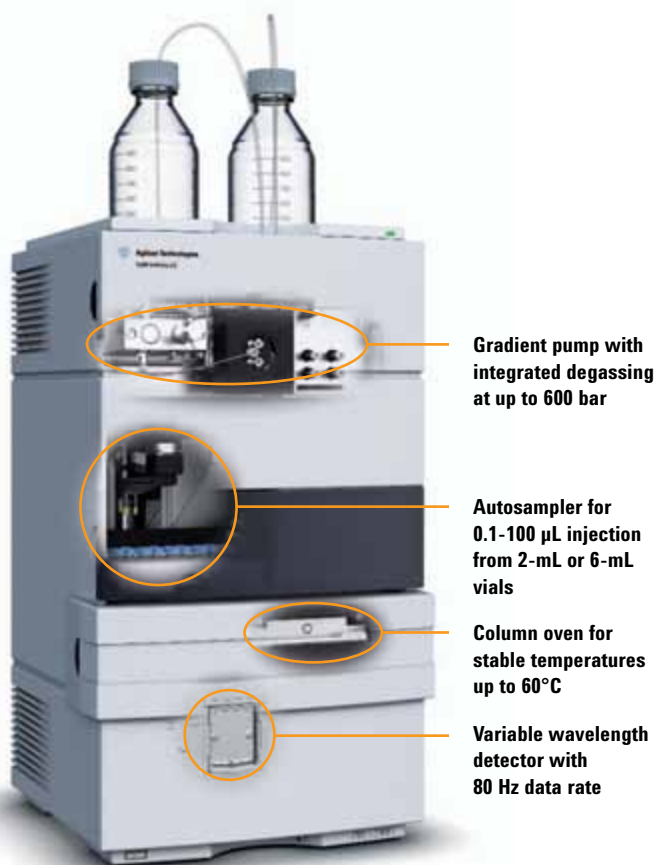


**LC/MS screening for EU-banned dyes in textiles. Total ion chromatogram (TIC) of a mixture of 22 aromatic amines operated in time programmed SIM mode.**

ZORBAX Eclipse Plus C18, 3.0 x 50 mm, 1.8  $\mu$ m  
Absorbance [mAU]



**Easy transfer of an HPLC method to UHPLC by deploying a shorter column with sub-2-micron particles. Shorter analysis time and improved resolution are the result.**



### Manual injector

An easy to use, easy to maintain solution for low throughput sampling, the manual injector includes a long-life 2-position, 6-port sample injection valve and standard 20  $\mu$ L loop. Front access to the valve facilitates easy sample injection and straightforward exchange of sample loops.

### Autosampler

The integrated autosampler is designed for reliability, safety, and easy maintenance, and facilitates reliable injections from 0.1 to 100  $\mu$ L. The unit delivers high precision as well as excellent linearity over a wide volume range. The autosampler's flow-through design ensures that there is no loss of sample; the entire sample drawn from the vial is injected. The standard configuration offers a sample capacity of 100 2-mL vials; alternatively, two half-trays each with 40 2-mL vials or 15 6-mL vials can be used.

### Column oven

The optimized column oven houses a single column, and provides accurate, stable column temperature from 10 degrees above ambient to 60 °C, for applications where retention time reproducibility and separation quality improve above ambient temperatures.

### Variable wavelength detector

Featuring simplified optics for high sensitivity, low baseline drift, wide linear range, and 80 Hz data rate, Agilent's variable wavelength detector not only lowers your detection limits and expands your capabilities – it lowers your cost of ownership with easy front access for fast lamp and flow cell replacement.

Isocratic Configuration	Gradient Configurations	
Isocratic Pump	Gradient Pump	Gradient Pump
Manual Injector	Manual Injector	Autosampler
---	---	Column Oven
Variable Wavelength Detector	Variable Wavelength Detector	Variable Wavelength Detector

Choose from three standard configurations to fit your LC workflow – then upgrade as required to meet your lab's future needs.

# New levels of usability and uptime.

Agilent offers software and informatics solutions to obtain all the benefits of the 1200 Infinity Series' performance levels. Agilent ChemStation and Agilent EZChrom Elite give you the most comprehensive and fully traceable management of any 1200 Infinity Series LC system. These chromatography data systems focus on different analytical workflows but are based on common instrument drivers and navigation, offer one unified result data format and integrate seamlessly with Agilent OpenLAB Enterprise Content Manager (ECM). They are both fully scalable, giving you instrument control, result generation, data management and advanced reporting for all Agilent 1200 Infinity Series LC systems.

## Agilent OpenLAB reaches beyond the lab

Agilent OpenLAB enables you to manage, share, and organize your data securely across laboratories and departments. It lets you derive business intelligence with a relational reporting database and offers workflow automation for fast execution of routine workflows.

## Agilent ChemStation maximizes the value of your 1200 Infinity Series LC in research and development

Agilent ChemStation is designed for the advanced needs of research and development scientists in chemical and pharmaceutical laboratories. It is easy to customize to specific needs and offers a broad range of add-on modules to support specific applications. ChemStation is the most comprehensive control software for all Agilent chromatography systems.

## Agilent EZChrom Elite maximizes the value of your 1200 Infinity Series LC in quality control

Agilent EZChrom Elite is fully scalable from an entry-level configuration with EZChrom Compact to a multi-user, multi-site distributed systems with hundreds of instruments and users. EZChrom offers full flexibility with control for chromatographic equipment from both Agilent as well as other vendors. This combination makes it ideal for routine operation in QA/QC laboratories.

## Agilent Lab Advisor

Lab Advisor helps you to keep your lab's instruments in top condition and reduces unnecessary lab downtime. It provides you with advanced diagnostic and maintenance capabilities for your 1200 Infinity Series LC – independent of the software you use to control your instrument. In short, Lab Advisor helps you achieve high quality chromatographic results in the most efficient way.



Agilent ChemStation



Agilent EZChrom Compact



Agilent Remote Advisor

# Accurate results quickly and confidently.

Maximize system performance and reliability for all your separation needs by combining your 1200 Infinity Series LC system with Agilent ZORBAX and Poroshell LC columns and LC supplies. Designed with the same attention to detail, quality and superior performance you have come to expect from Agilent instruments and backed by over 40 years of chromatography experience, you can count on Agilent's columns and supplies to deliver the high quality results you need and expect, time after time.

## Unparalleled quality and flexible choices within the ZORBAX LC column family

- Wide selection of chemistries – Eclipse Plus, Eclipse XDB, StableBond, Extend, Bonus-RP, HILIC and more – controlled and manufactured by Agilent to ISO quality standards
- Superior flexibility and product scalability with a wide range of particle sizes (1.8, 3.5, 5, 7 micron and new superficially porous 2.7 micron) and column dimensions
- Individual column performance reports to document column-to-column and lot-to-lot reproducibility
- Superior particle strength for even the most demanding high pressure applications

### Agilent ZORBAX Eclipse Plus

These columns are a time-tested winner for HPLC applications. They are made with a groundbreaking bonding treatment and endcapping process to improve peak shapes. Look to ZORBAX Eclipse Plus for:

- Exceptional peak shape, efficiency, resolution and lifetime for a broad application range of bases, acids and neutrals
- A first choice for method development
- An industry-leading range of configurations, including RRHT (1.8  $\mu\text{m}$ ) for enhanced speed and performance

### Agilent Poroshell 120

This is the newest advance in column technology. The superficially porous 2.7  $\mu\text{m}$  particle provides the ideal balance of high resolution at an HPLC operating pressure. The speed and efficiency is similar to sub 2  $\mu\text{m}$  columns, allowing high productivity and sample throughput on any LC.

## Agilent Advantage Service and Support

Agilent provides customer-focused products and services for all stages in an instrument's life cycle, from installation and upgrade to preventive maintenance and repair. Whether you need support for a single instrument or a multi-lab, multi-vendor operation, Agilent offers an Advantage service solution to help you increase your uptime, optimize your lab's resources, and resolve any problems quickly.

## Agilent Compliance and Functional Verification Services

Agilent has been ranked number one in compliance by independent survey for fifteen years. This means you get the proof of calibration or system qualification you need to support your ISO 17025 or GLP/GMP quality initiatives. And, with Enterprise Edition, you can even obtain consistent, harmonized reports across all your Agilent and non-Agilent systems.

## Agilent Software Service and Support

Agilent's Professional Services organization facilitates process and productivity enhancements using software and informatics products and technology. Partner with Agilent consultants and let us help you develop comprehensive software and support strategies that ensure continued system uptime and maximum productivity.



ZORBAX Eclipse Plus RRHT Columns and Poroshell 120 are two great performing columns to consider for your Agilent 1200 Infinity LC.





## Best solution for any application – and any budget!



For utmost flexibility Agilent has created a continuum of products – from compact instruments for routine LC to ultrahigh performance LC/MS systems. Choose the best configuration to optimize every part of your laboratory operations and rest assured that each system can be enhanced as required to meet future challenges.

## Agilent Value Promise – 10 years of guaranteed value

In addition to continually evolving products, we offer something else unique to the industry – our 10-year value guarantee. The Agilent Value Promise guarantees you at least 10 years of instrument use from your date of purchase, or we will credit you with the residual value of that system toward an upgraded model. Not only does Agilent ensure a safe purchase now, we help ensure your investment is as valuable to you in the long run.

## Agilent Service Guarantee

Should your Agilent instrument require service while covered by an Agilent service agreement, we guarantee repair or we will replace your instrument for free. No other manufacturer or service provider offers this level of commitment to keeping your laboratory running at maximum productivity.



## Further information

For full details of the Agilent 1200 Infinity Series LC systems and application-based LC solutions, ask for a brochure or visit our web site at [www.agilent.com/chem/1200](http://www.agilent.com/chem/1200)



### Agilent 1200 Infinity Series Selection Guide

Publication Number  
5990-4333EN

### Agilent 1200 Infinity Series Portfolio

Publication Number  
5990-3333EN

### Agilent 1290 Infinity LC

Publication Number  
5990-5062EN

### Agilent 1260 Infinity LC

Publication Number  
5990-5061EN

### Learn more:

[www.agilent.com/chem/1220](http://www.agilent.com/chem/1220)

### Buy online:

[www.agilent.com/chem/store](http://www.agilent.com/chem/store)

### Find an Agilent customer center in your country:

[www.agilent.com/chem/contactus](http://www.agilent.com/chem/contactus)

### U.S. and Canada

1-800-227-9770, [agilent\\_inquiries@agilent.com](mailto:agilent_inquiries@agilent.com)

### Europe

[info\\_agilent@agilent.com](mailto:info_agilent@agilent.com)

### Asia Pacific

[inquiry\\_lsca@agilent.com](mailto:inquiry_lsca@agilent.com)

© Agilent Technologies, Inc. 2010, 2011  
Published in USA, May 1, 2011  
Publication Number 5990-5060EN



**Agilent Technologies**